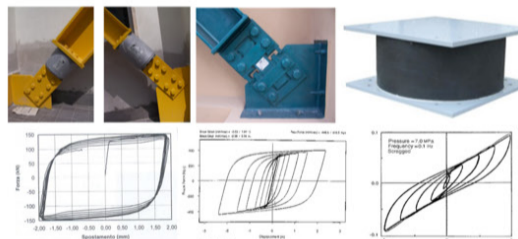
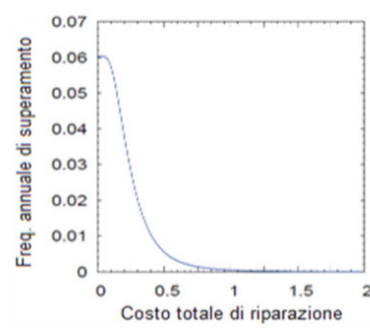
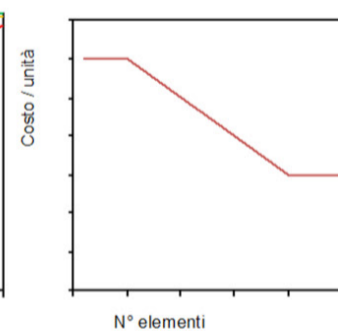
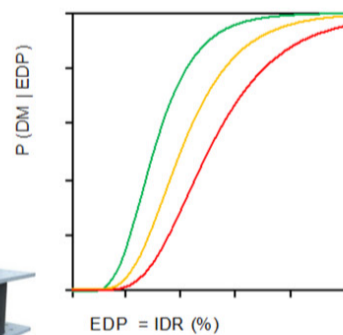
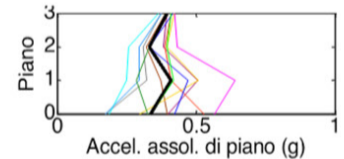
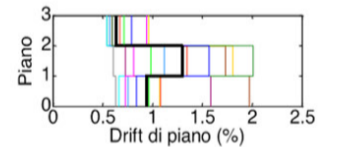
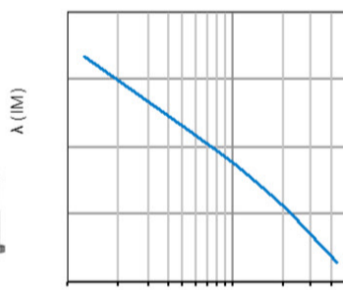
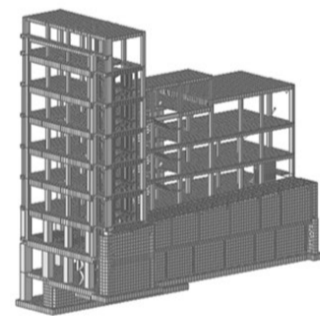
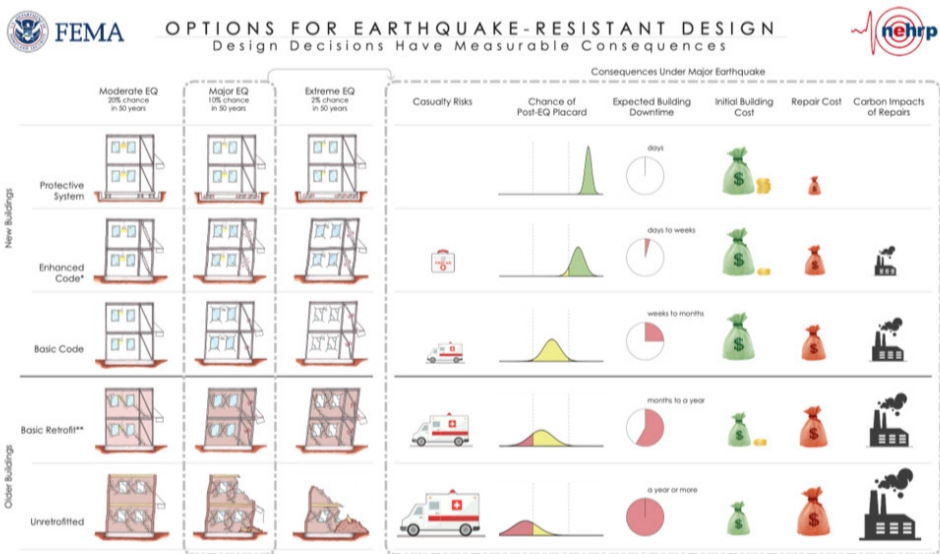


RISCHIO SISMICO

metodi per la valutazione
e strategie di intervento

Rosario Gigliotti
Sapienza Università di Roma

20.12.2023
Badoer
aula T2
ore 15



Analisi decisionali

$$R_{BC} = \frac{\sum_{t=1}^{V_r} \frac{EAL_{pre}}{(1+r)^t} - \sum_{t=1}^{V_r} \frac{EAL}{(1+r)^t}}{C.I.}$$

