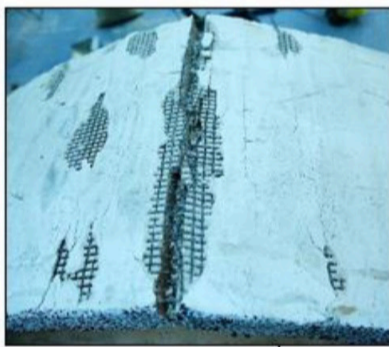
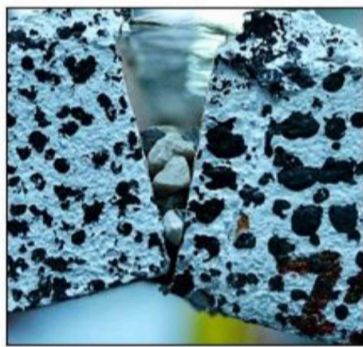


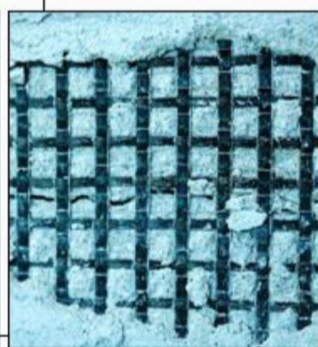
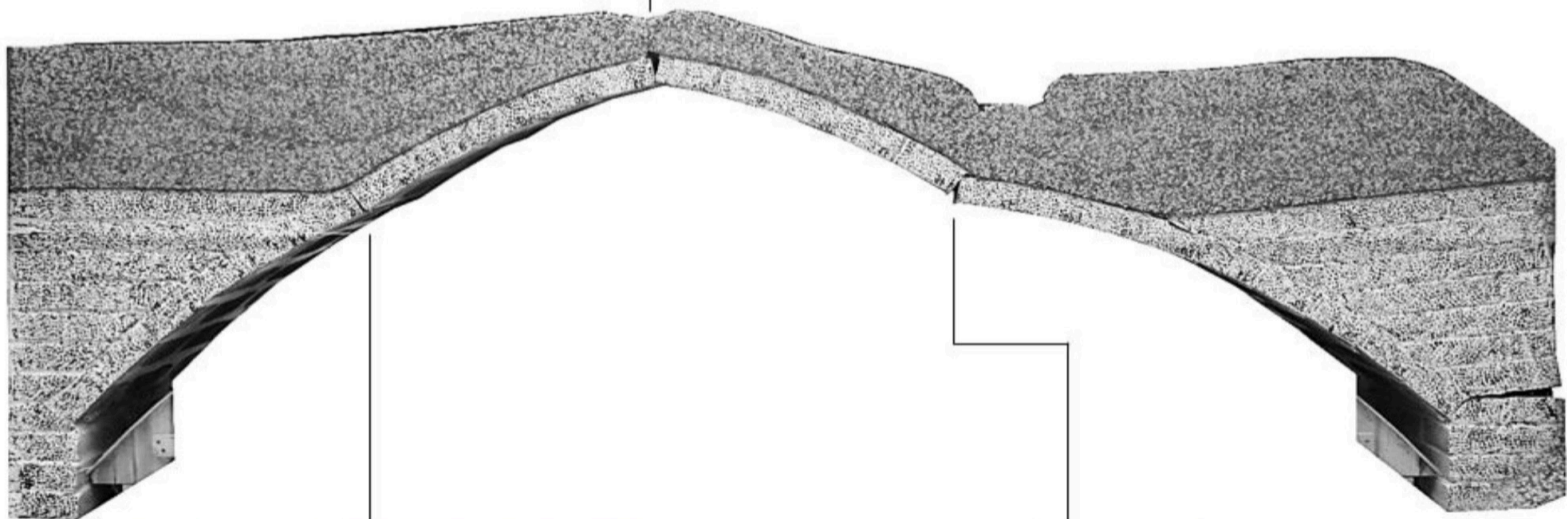
STRENGTHENING MASONRY VAULTS WITH FRCM

Gianmarco de Felice
Università degli studi Roma Tre

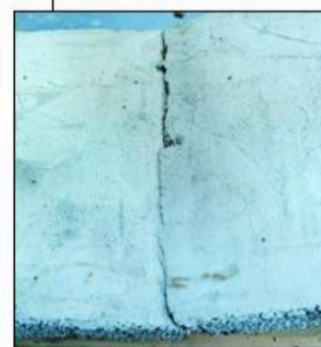
7.5.2019
Badoer
aula A
ore 15.30



Crack opened at the extrados of the arch barrel. Detachment of the basalt fabric and breaking of the matrix. Telescopic rupture of basalt wires leading to the brittle failure of the vault.



Crack opened at the intrados of the arch barrel. Crushing of the mortar matrix at the extrados. No loss of bond of the basalt fabric, keeping the connection between arch barrel and buttress wall effective.



Crack opened at the intrados of the arch barrel. Local crushing of the mortar joints at the extrados.