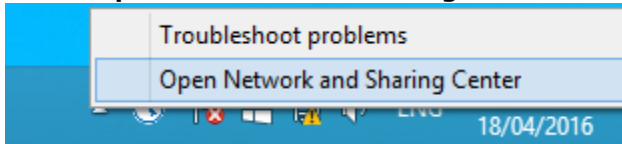


## Connecting to Eduroam via Microsoft Windows 8

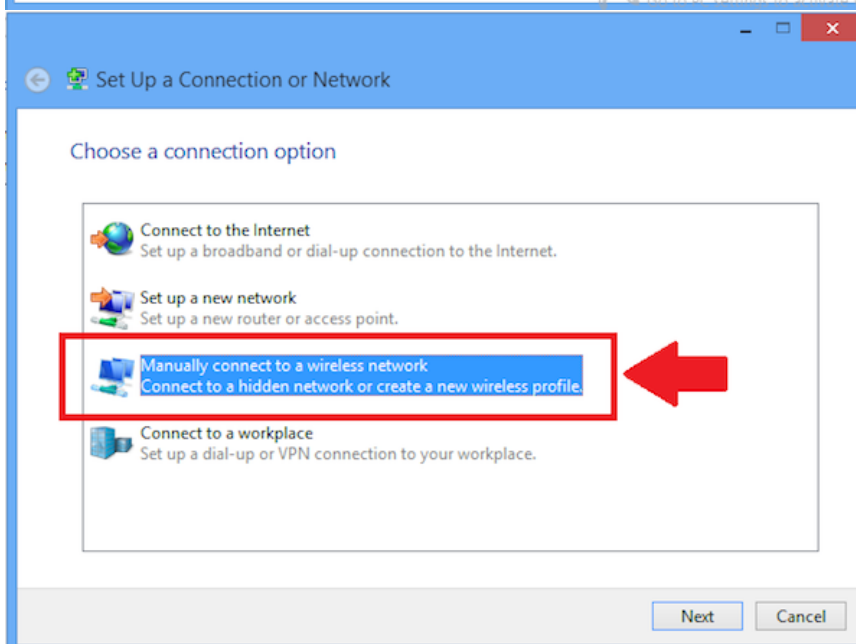
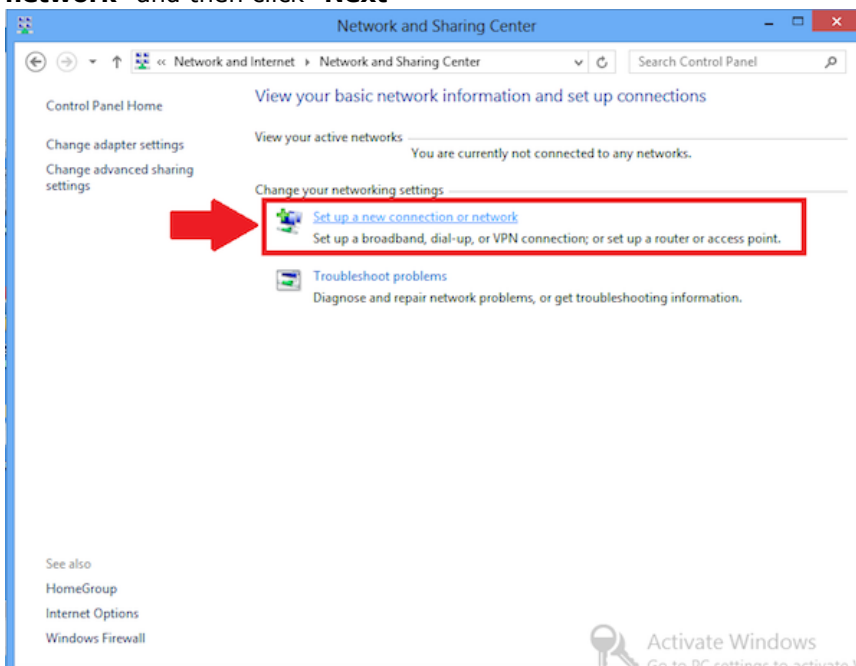
The following instructions apply to using the Eduroam wireless service on Microsoft Windows 8 and Microsoft Windows 8.1 machines.

### Step 1) Configuring the network

1. From the Desktop screen Right Mouse Click on the wireless icon in the bottom right of the desktop and select **"Open Network and Sharing Centre"**:

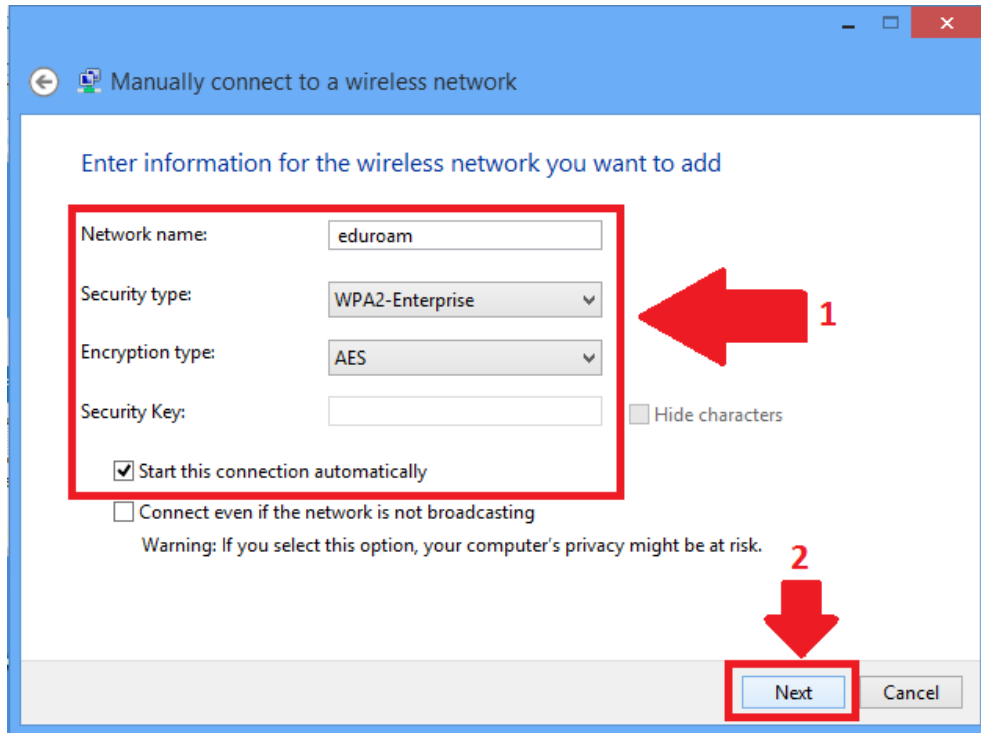


2. Select **"Setup a New Connection or Network"**, then select **"Manually connect to a wireless network"** and then click **"Next"**

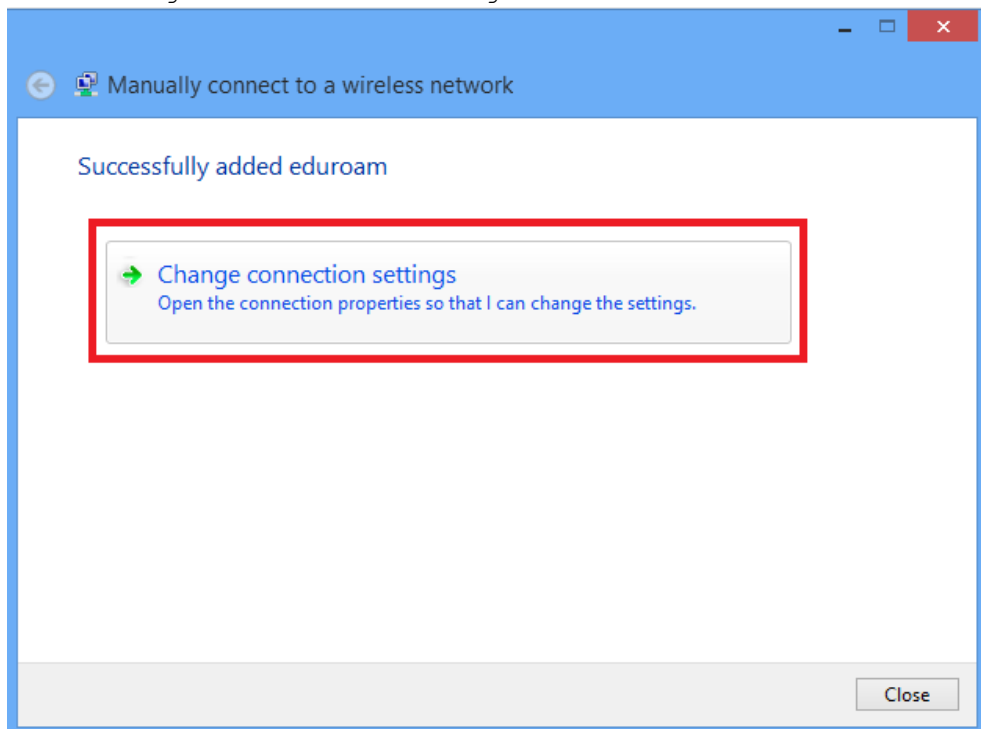


3. Now enter the following details

1. Network Name: **eduroam**
2. Security Type: **WPA2-Enterprise**
3. Encryption Type: **AES**
4. Ensure the tick box "Start this connection automatically" contains a tick.
5. Click "Next"

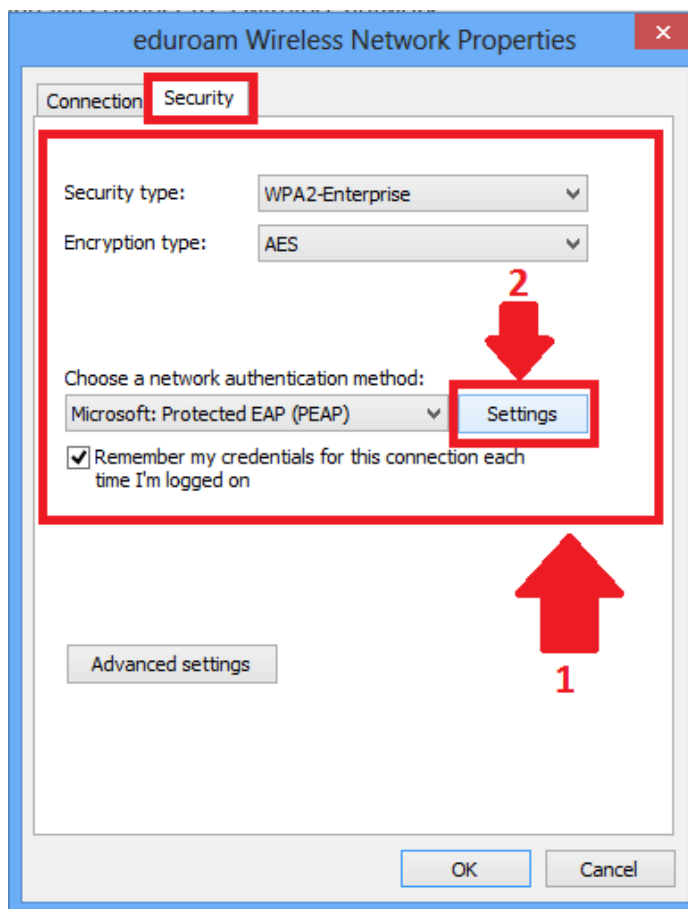


6. Select "Change Connection Settings"



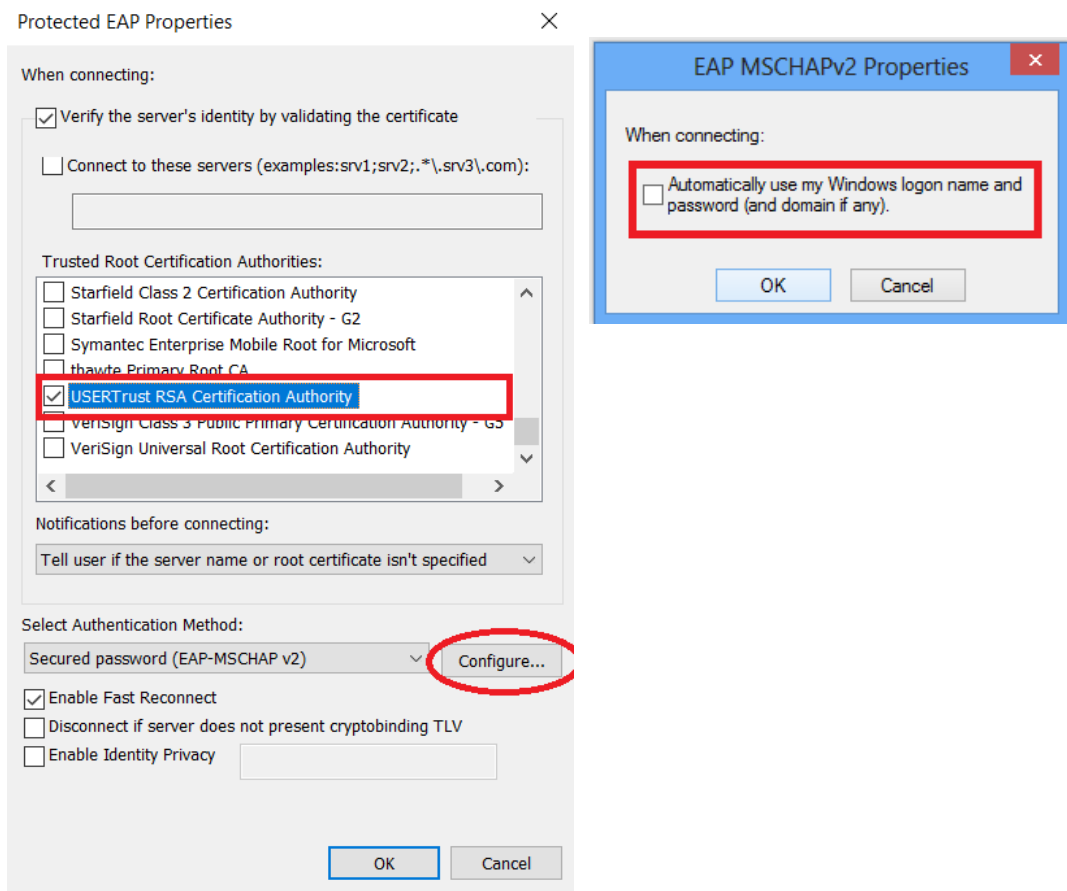
4. In the “**eduroam Wireless Network Properties**” window

1. The initial screen should have the details filled in already so select the “**Security**” Tab and then, next to the “Microsoft: Protected EAP (PEAP)” option, click on the “**Settings**” button.



5. In the "Protected EAP Properties" window:

1. Check the box that says "Verify the server's identity by validating the certificate".
2. In "Trusted Root Certification Authorities" list, tick the box next to "USERTrust RSA Certification Authority" (if this certificate does not appear, see **Note 1**)
3. Check the box that says "Enable Fast Reconnect".
4. Click on the "Configure..." button underneath the heading "Secure Authentication Method" and in the "EAP MSCHAPv2 Properties" ensure the check box "Automatically use my Windows logon name and password (and domain if any)" is UNCHECKED.

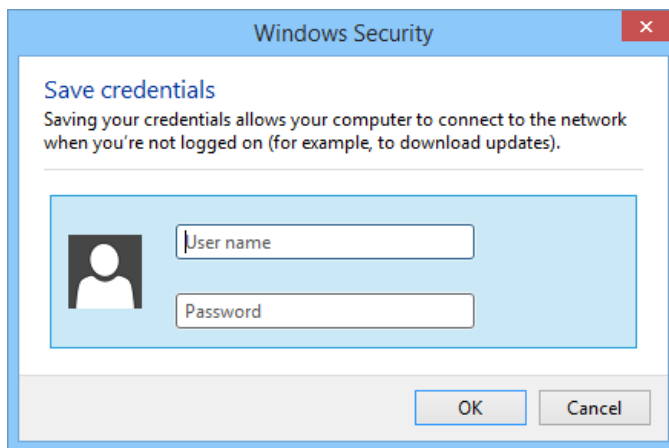
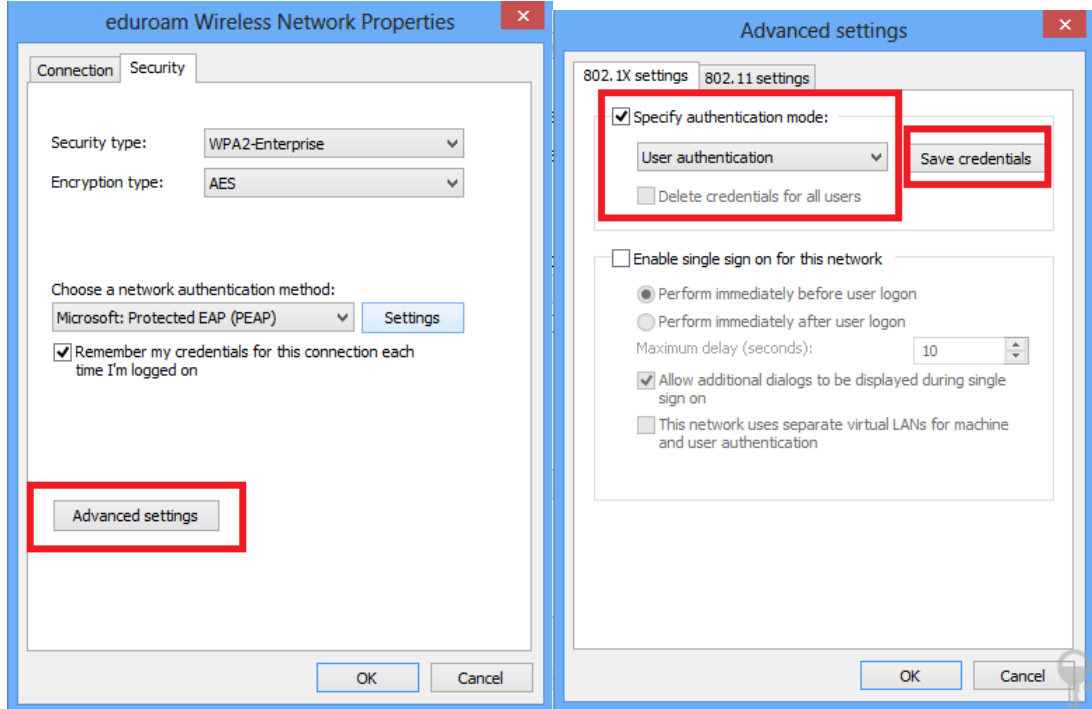


5. Click "OK" and then "OK" to return to the "Security" tab

6. From the "Security" tab on the "eduroam Wireless Network Properties" window

1. Click on the "Advanced Settings" button
2. On the "Advanced Settings" screen, check the box that says "Specify authentication mode" and, from the pull-down Menu select "User authentication".
3. Click on the "Save credentials" button. Your login details must be entered in the open window:

Enter your **account username** followed by **@iuav.it** (**warning** this applies to both professors and students, who will have to use **@iuav.it** domain - not to be confused with the email domain) and your **account password**



Select "OK" on each of the various dialogue boxes to close them.

## Step 2) Connecting to the network

Once near an eduroam access point, select the access point from the possible connections by clicking on the Wireless Network Menu via the Desktop and selecting "eduroam"

Click on the "Connect" button.

**Note 1: Warning:** The certificate to be selected is "USERTrust RSA Certification Authority"; If this certificate is not available between those that are listed you can download it from <http://www.iuav.it/eduroam> web page and install it.

**Note 2:** if you have pc/smartphone with Windows, Apple or other operating system, who is not connecting to wireless network, you need to verify that all recent **operating system updates** are installed. This is also recommended in order to **avoid connecting vulnerable devices** to the wireless network.

---

### contacts

area tecnica

servizio infrastrutture ICT

[helpdesk@iuav.it](mailto:helpdesk@iuav.it)