

eduroam wireless network Setup for Windows 10.

THESE INSTRUCTIONS ARE FOR WINDOWS 10

The screenshots and menu options referenced here may be slightly different depending on the edition of Windows you are running.

This document contains the following instructions.

1. Configuring Your Windows 10 device for eduroam wireless network
2. Connecting to eduroam wireless network.
3. Updating credentials if you change your password
4. Downloading and Installing the Certificate required to connect to eduroam wireless network

Please Note:

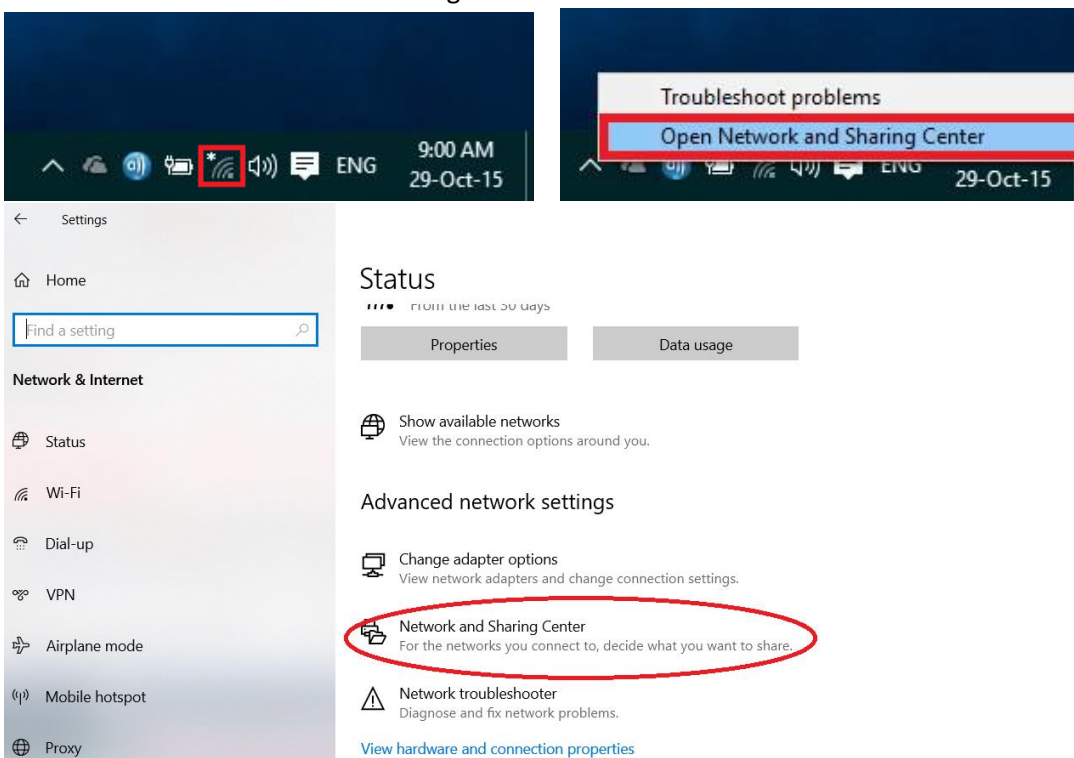
Windows 10 will not permit you to simply select eduroam from your list of wireless networks and enter your credentials. You must follow the instructions below.

1: Configuring Your Windows 10 device for eduroam wireless network

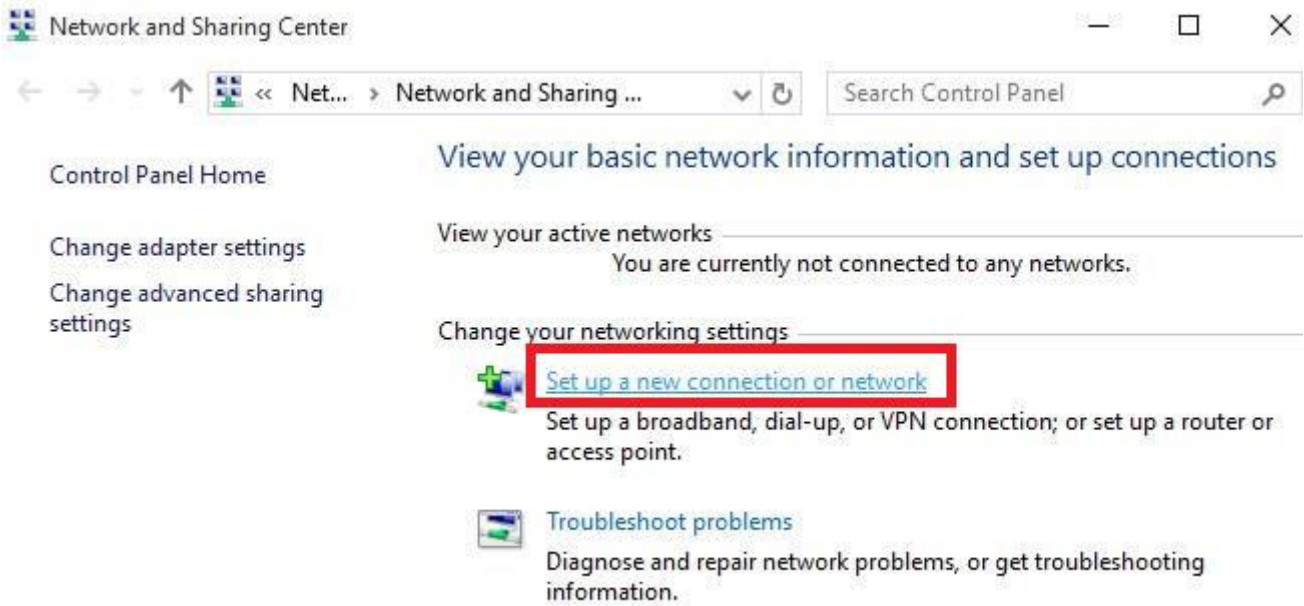
Windows 10 requires luav credentials to be saved/stored therefore if you change your network password you will need to follow the instructions on “Updating credentials if you change your password”.

Setting up the eduroam connection

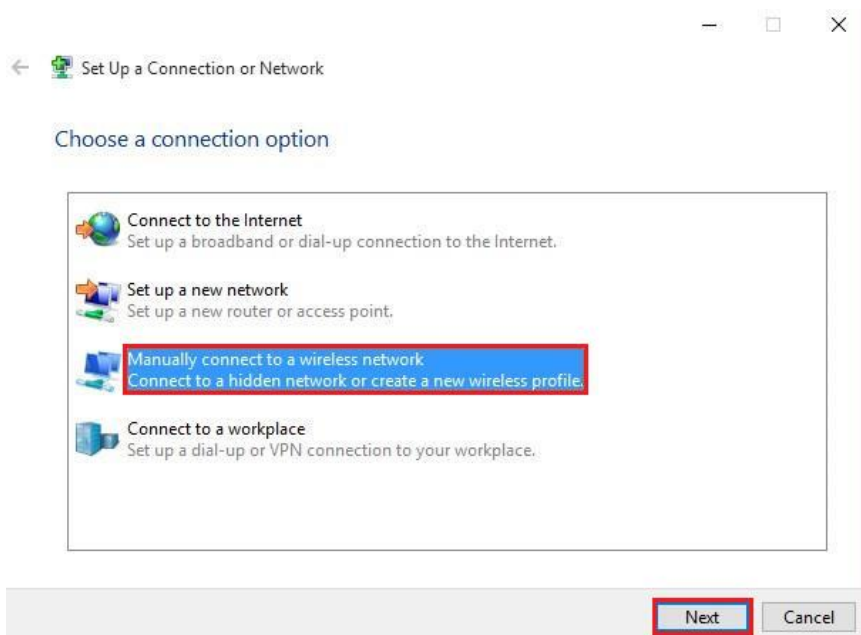
- 1.1 Right click on the “Wi-Fi/Wireless” icon on the System tray, as highlighted in the screen below, and then click on the “Open Network and Sharing Center” link.
Click on the “Network and Sharing Center” link.



1.2 Choose “Set up a new connection or network” link.



1.3 Click on “Manually connect to a wireless network”. Click on the “Next” button.



1.4 Type in/complete the network details exactly as shown in the diagram below

Network Name: eduroam

Security type: WPA2-Enterprise

Encryption Type: AES

1.5 Select “Start this connection automatically” then click on the “Next” button

Manually connect to a wireless network

Enter information for the wireless network you want to add

Network name:

Security type:

Encryption type:

Security Key: Hide characters

Start this connection automatically

Connect even if the network is not broadcasting

Warning: If you select this option, your computer's privacy might be at risk.

Click on the “Change connection settings” link.

Manually connect to a wireless network

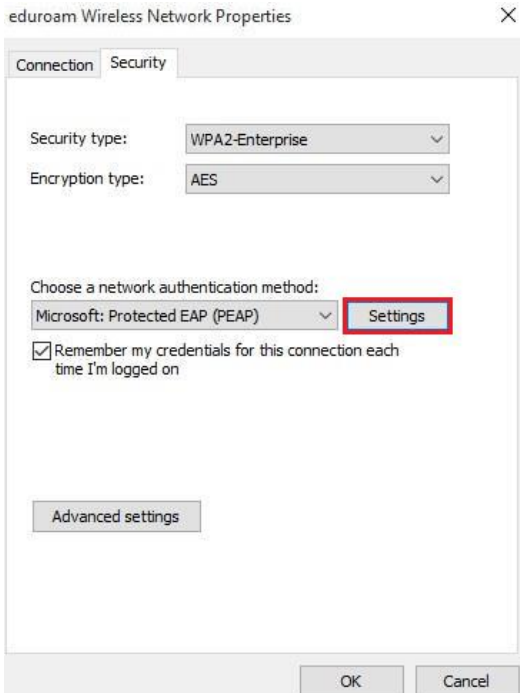
Successfully added eduroam

[→ Change connection settings](#)
Open the connection properties so that I can change the settings.

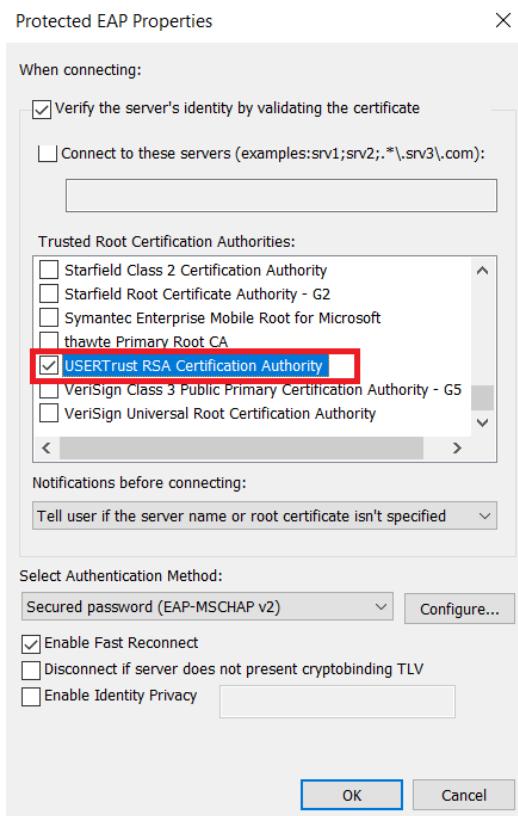
1.6 Click on the “Security” tab at the top of the dialog box.



1.7 Click on the “Settings” button (beside the pull down menu where it says “Microsoft: Protected EAP (PEAP)”).

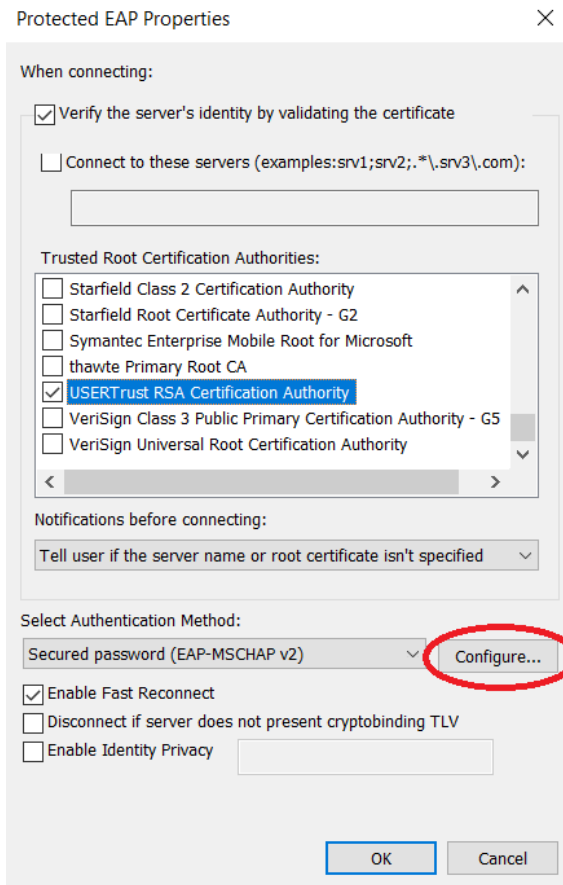


1.8 Ensure the box beside “Verify the server’s identity by validating the certificate” is checked. From the list shown below labelled “Trusted Root Certification Authorities”, scroll down and choose “USERTrust RSA Certification Authority” by checking the box beside it.

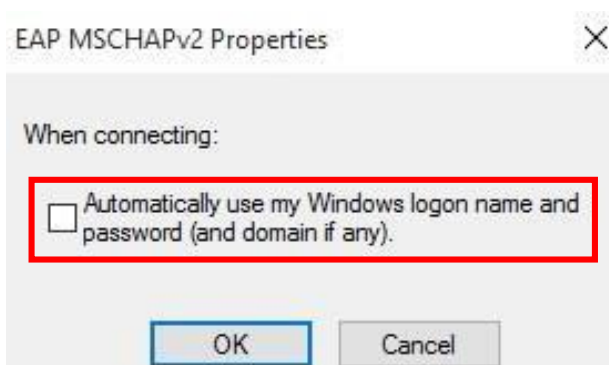


Please Note: If this certificate is not listed on your machine, close the window above by clicking on the “Cancel” button, but leaving the screen from step 8 open. Please go to “Downloading and installing the security certification” further down the page to install the certificate, then return to step 8 to set continue setting up the connection.

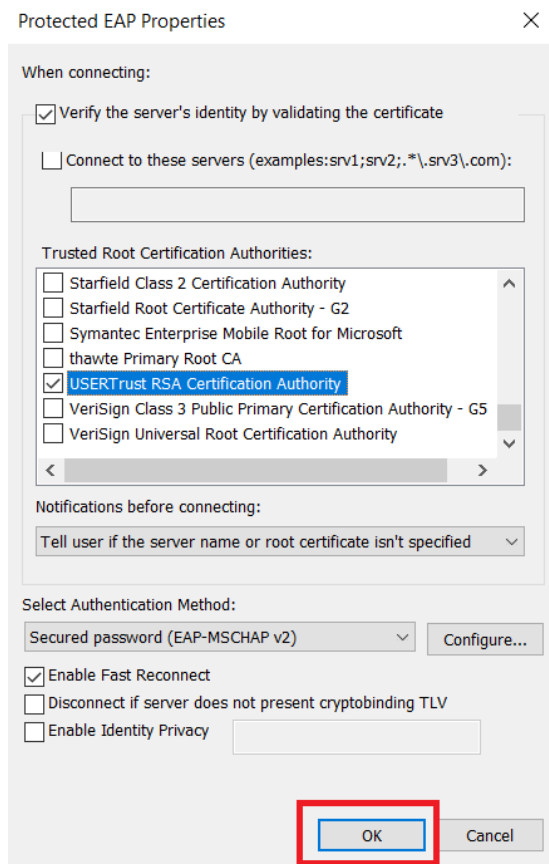
1.9 Click on the “Configure...” button (located beside “Secured password (EAP-MSCHAPv2)”).



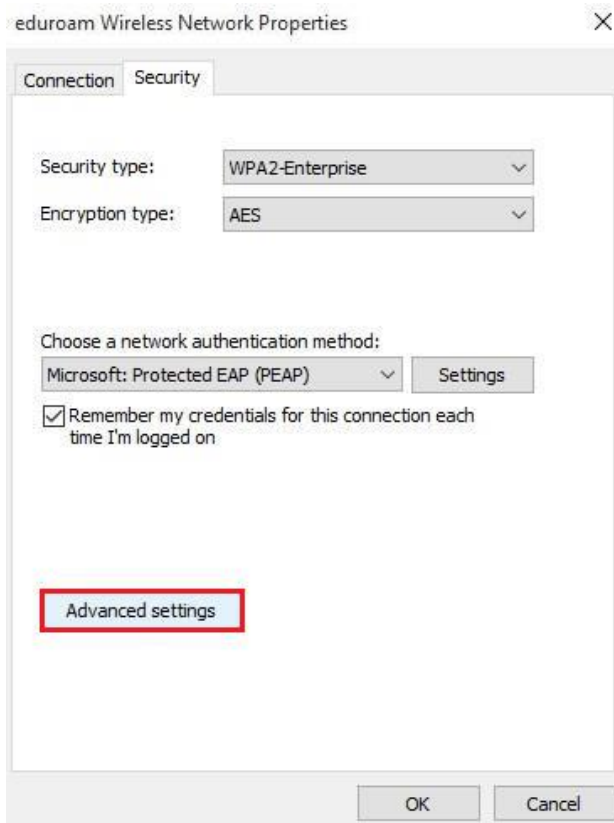
1.10 Ensure the checkbox beside “Automatically use my Windows logon name and password” is **unchecked** as in the screen below. Click on the “OK” button.



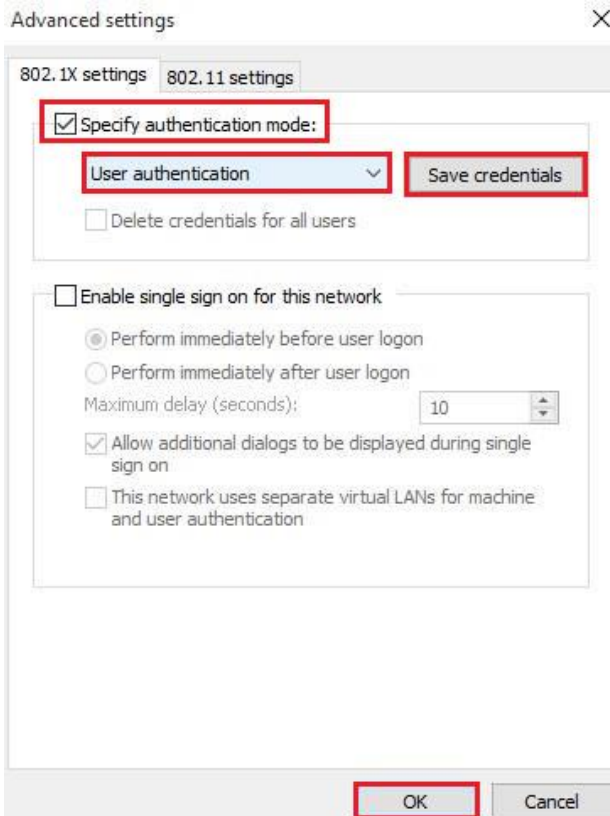
Click on the “OK” button on the “Protected EAP Properties” window.



1.11 Click on the “Advanced Settings” button near the bottom of the window.

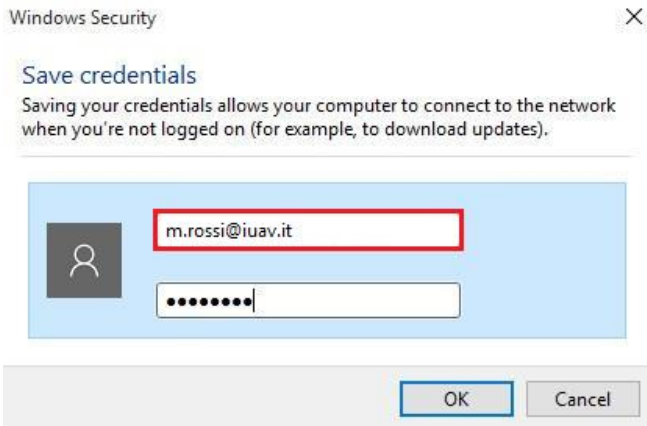


1.12 Check the box beside “Specify authentication mode”, and select “User authentication” from the menu below. Click on the “Save Credentials” button. .



1.13 Your login details must be entered in the open window:

Enter your **account username** followed by **@iuav.it** (**warning** this applies to both professors and students, who will have to use **@iuav.it** domain - not to be confused with the email domain) and your **account password**



Click on the "OK" button.

1.14 Click "OK" on any dialog boxes that are still open. Close the "Manage Wireless Networks" window.

2: Connecting to eduroam

2.1 To connect to eduroam, left click on the "Wi-Fi/Wireless" icon in the System tray.

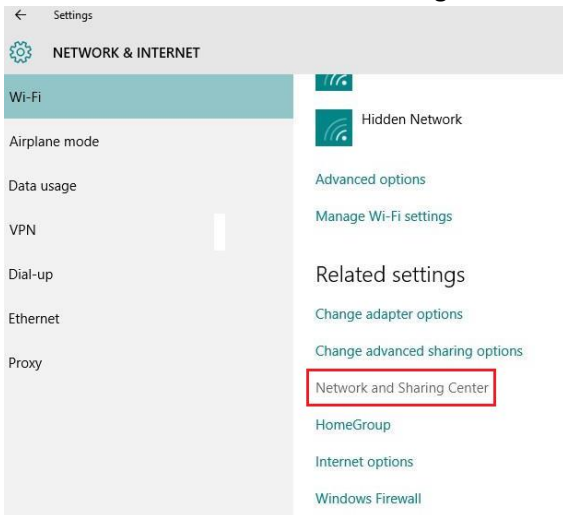
2.2 Click on eduroam and click on the "Connect" button. Select the "Connect Automatically" checkbox.

3. Updating credentials if you change your password

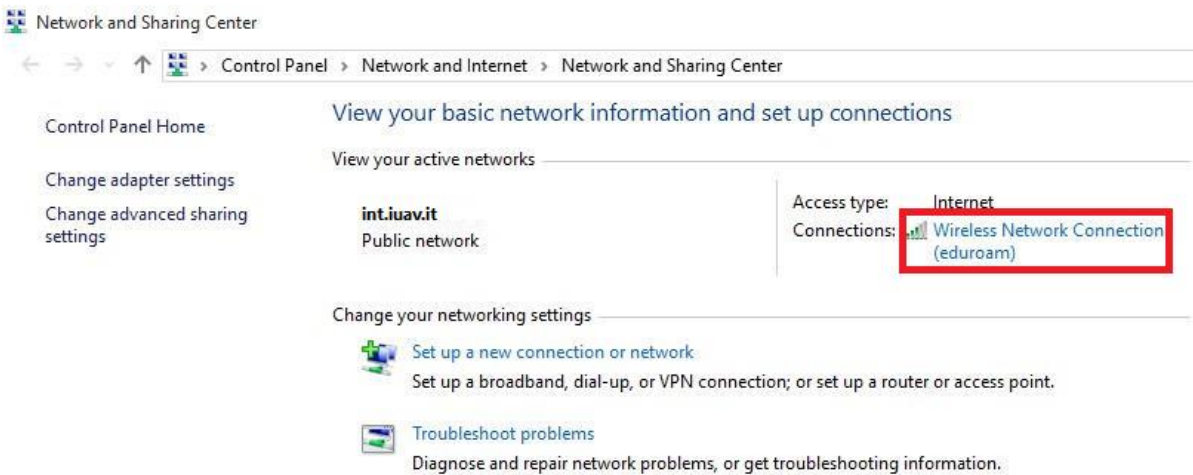
3.1 From the Windows Menu select "Settings" then choose "Network & Internet" as shown below:



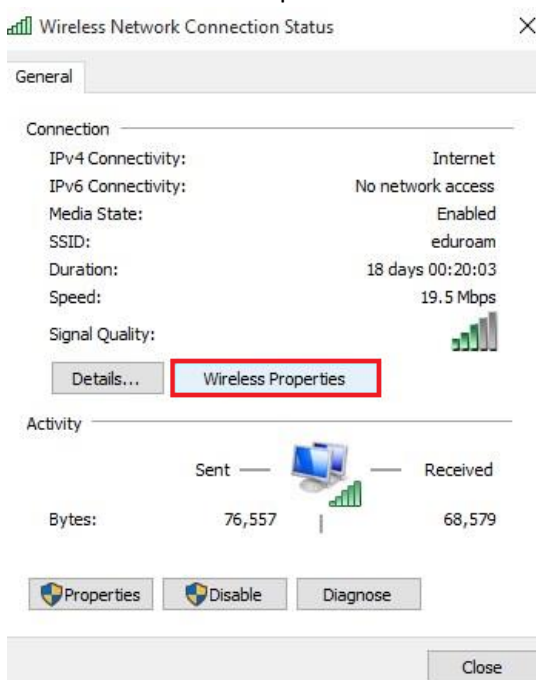
3.2 Next select “Network and Sharing Center”



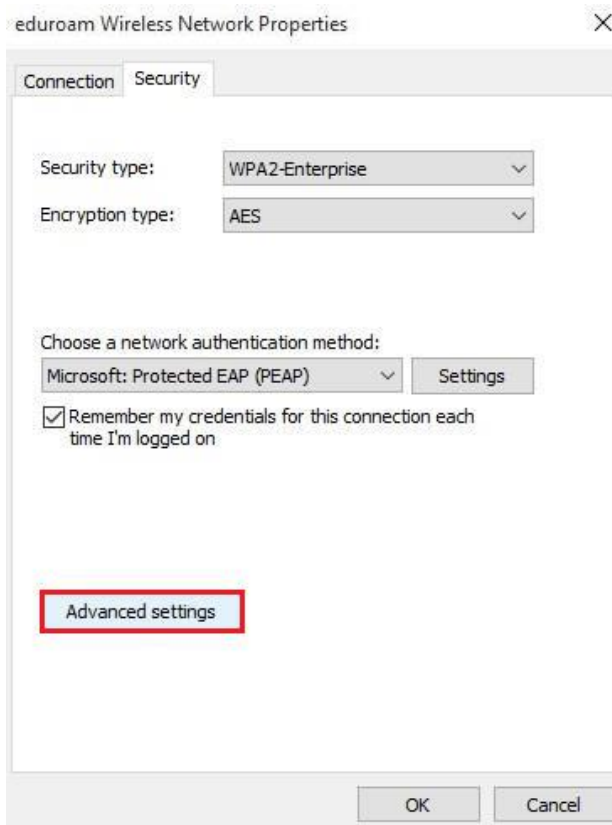
3.3 Select the eduroam wireless connection



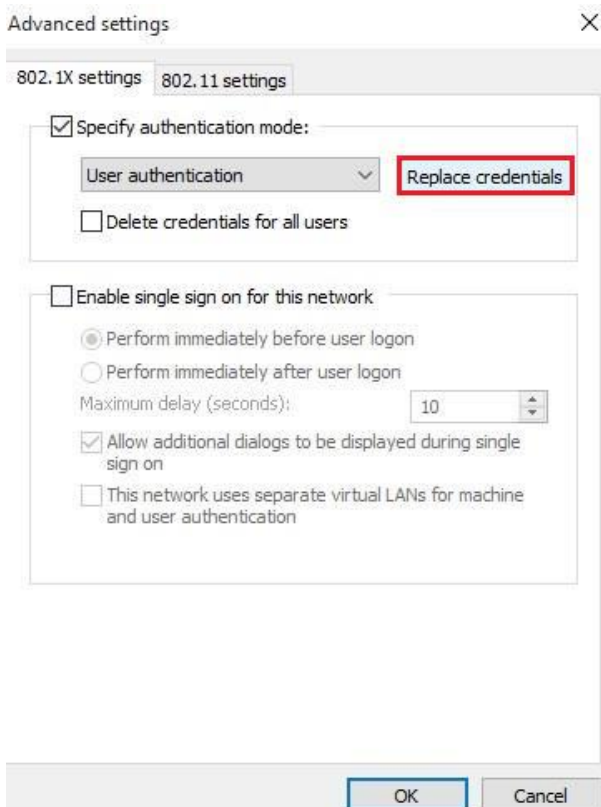
3.4 Select Wireless Properties



3.5 Select Advanced Settings from the Security Tab



3.6 Click on the "Replace Credentials" button.



Type your new credentials in the open window:

Enter your **account username** followed by **@iuav.it** (**warning** this applies to both professors and students, who will have to use **@iuav.it** domain - not to be confused with the email domain) and your **account password**

Click on the "OK" button.

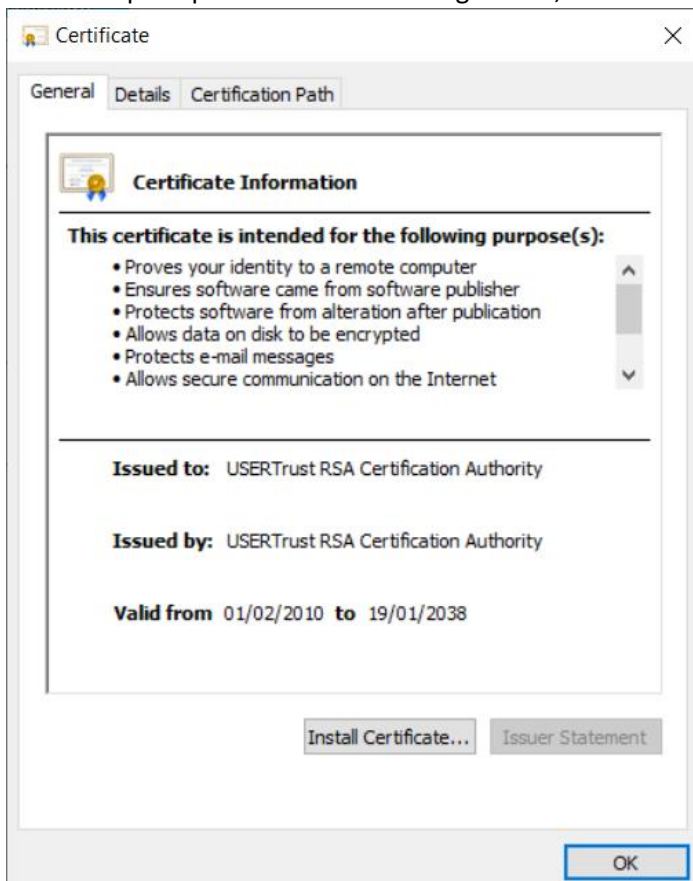
4. Downloading and Installing the Certificate required to connect to eduroam wireless network (Only required if not already on machine)

Please Note: This step is only required the first time you are connecting to eduroam or if you have attempted to set up the eduroam connection and found that the required certificate is not already listed on your machine. Università luav di Venezia uses a CA security certificate for eduroam wireless Network so that you can check and have confidence that you are connecting securely to genuine luav servers only. To ensure that your connection is secure, you need to install "**USERTrust RSA Certification Authority**". To do this, you will need to use another wireless network, connect to 3G or copy the certificate from a wired PC to a USB storage device to install on your device.

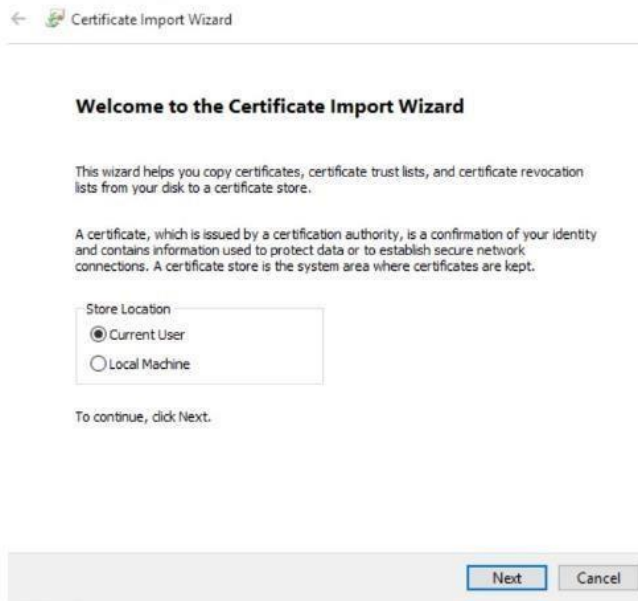
4.1 Download the certificate file from the luav website at <http://www.iuav.it/eduroam/> by clicking on the "**USERTrust RSA Certification Authority**" link.

4.2 When the certificate has downloaded, double click on the certificate and when prompted and select open.

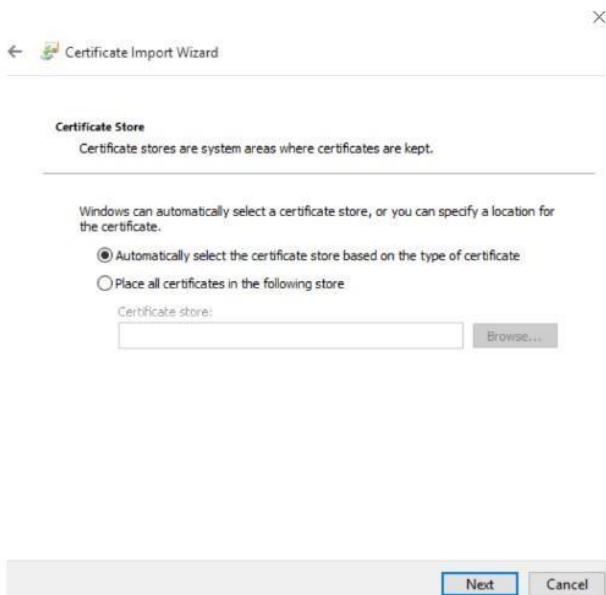
4.3 When prompted with the following screen, click on the "Install Certificate" button.



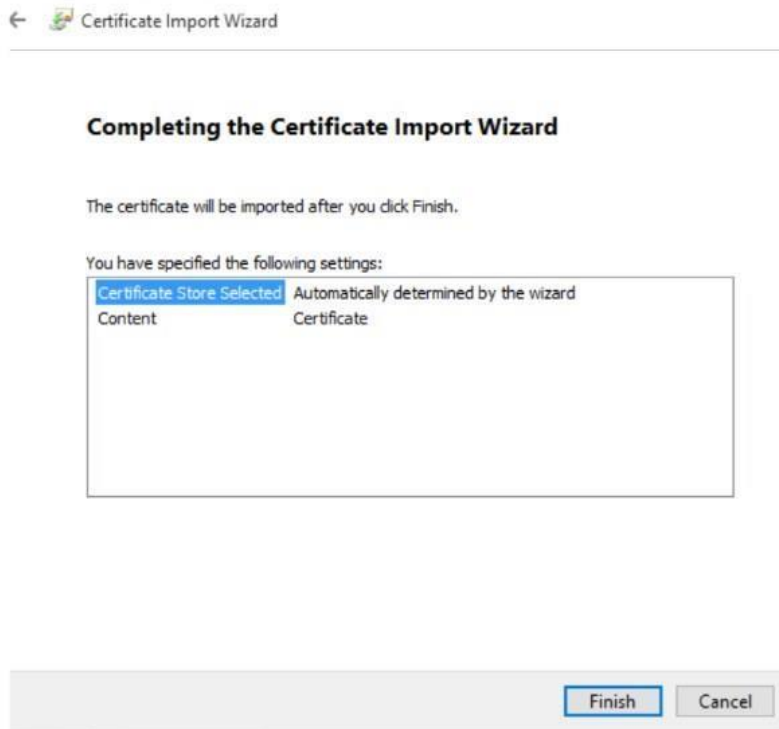
4.4 Select Current User Next and Click on the “Next Button” when the “Welcome Certificate Import Wizard” screen appears.



4.5 Select “Automatically select the certificate store based on the type of certificate” by clicking on/selecting the radio button to the left of it and select next.



4.6 Check that the “Completing the Certificate Import Image” now reads the same as in the image below and then click on the “Finish” button.



You should then be presented with the following screen to let you know the certificate has been successfully installed. Click ok to finish.



contacts

area tecnica

servizio infrastrutture ICT

helpdesk@iuav.it